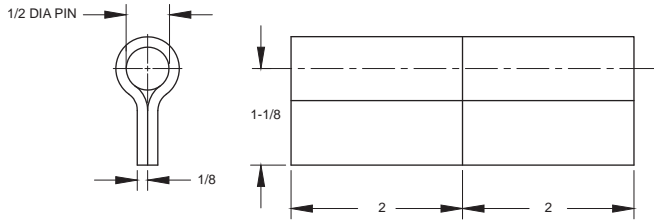


M-1 Butt Hinge

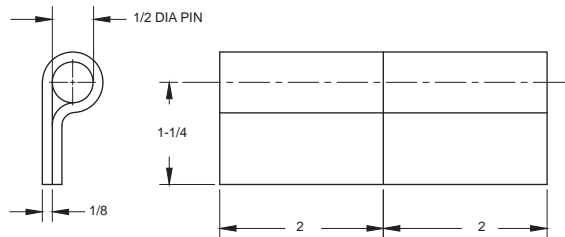
Steel construction/plain finish
Removable 1/2" x 3-3/4" pin
Available in stainless steel
Available with 4" or 4-1/2" pin
Available with 3/8" DIA pin
Available with welded pin
Available with holes



FM1375XXXXXX

M-1A Flush Mount Butt Hinge

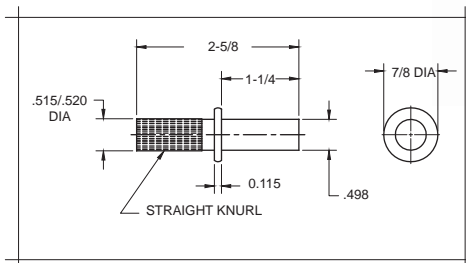
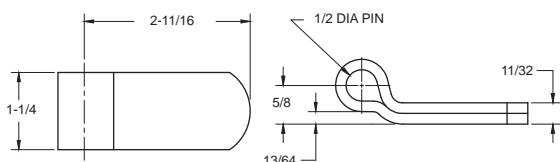
Steel construction/plain finish
Removable 1/2" x 3-3/4" pin
Available in stainless steel
Available with 4" or 4-1/2" pin
Available with 3/8" DIA pin
Available with welded pin (right or left hand)
Available with holes



FM1A37XXXXXX

2B Universal Butt Hinge

Steel construction/plain finish
1/2" knurled pin
Available with 2-1/4" or 2-1/2" straight pin
available with welded pin (right or left hand)



F2B2.5XXXXNS