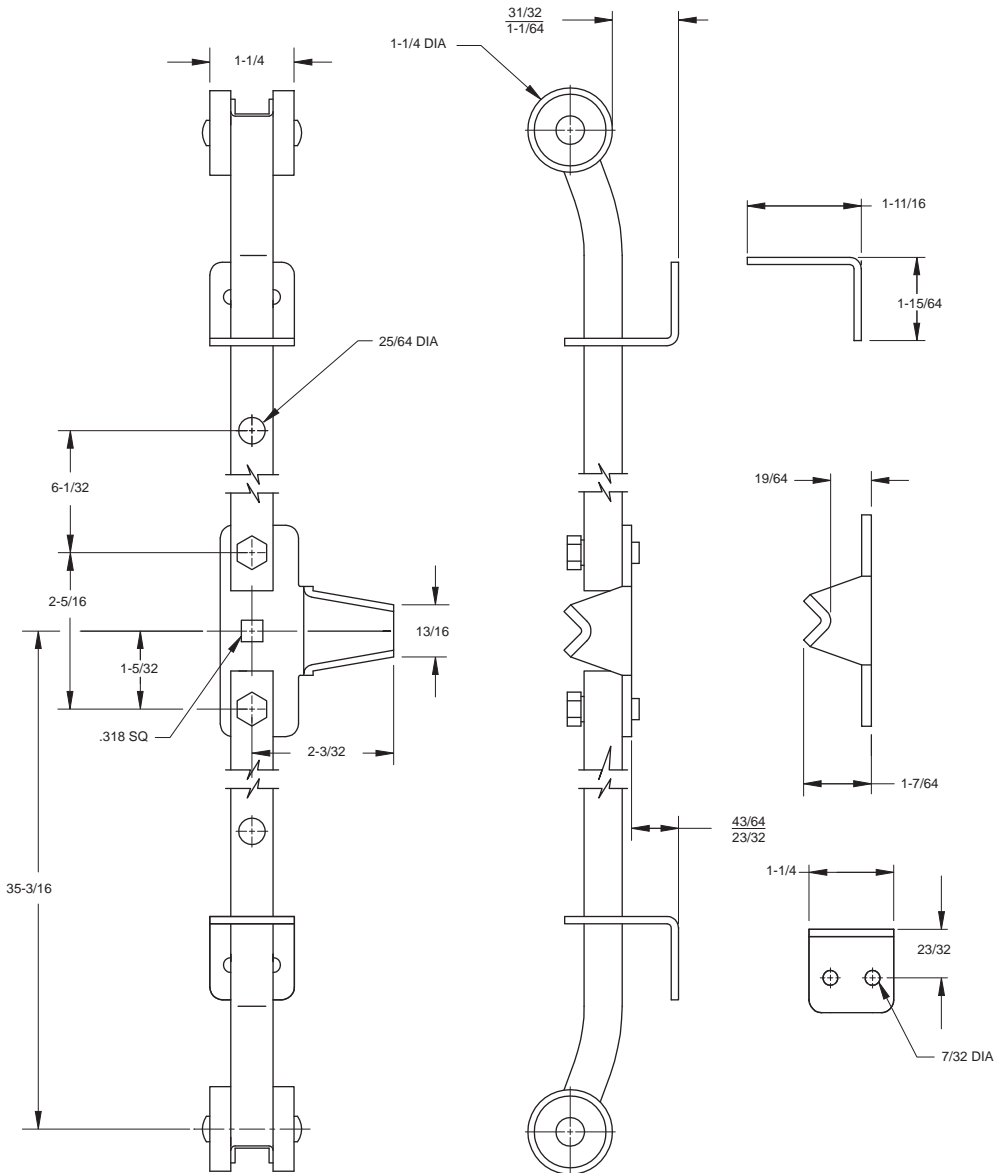


113 Door Lock Kit

- Steel construction/zinc finish
- (2) 35" roller rods
- (1) 113 center cam
- (2) "L" brackets
- (2) 113 shoulder screws
- Accepts 5/16" square shank
- Available in aluminum
- Specify No. 113-6 for heavy cam
- Available with roller cam
- Specify No. 113-48 for 48" rods
- Available with stainless steel rods



113-KIT



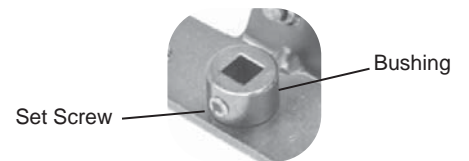
Optional Cams



113-6

113-R

Optional cams are available with an adjustable bushing.



This eliminates the need for a threaded shaft, thus reducing cost.